

RangeVision **NEO**

High-quality 3D scanning is available to everyone now!



Education and science



Arts and culture



Visualisation



Product design



Hobbies



Easy and fast scanning



Affordable price



Free software and updates



RangeVision NEO is an optical scanner with structured light technology.

It is **reliable and easy to use**, connects to a computer via USB 3.0 and HDMI ports, does not require external power and has 2 MP colour cameras.

Portable and compact

- ▶ weighs only 1 kg
- ▶ easily fits on a desk
- ▶ comes in a protective travel case



Get detailed colour 3D models to accomplish your tasks



at home



at school



at university



at office



Colour texture capturing



Accuracy up to 0.05 mm

High-quality 3D scanning

Object size from 1 cm to 1.2 m



Applications



Education and science

- Training
- Research
- Virtual tests



Product design

- Reverse engineering
- Customization
- 3D documentation



Visualisation

- Virtual reality
- Animation



Hobbies

- 3D models for 3D printing
- Replication of objects
- Measurement of complex geometry



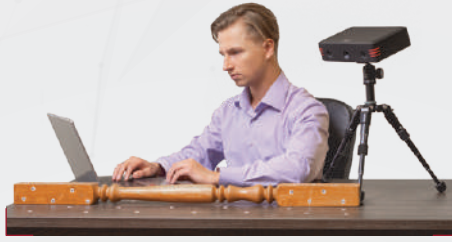
Arts and culture

- Cultural heritage preservation
- Digitization of exhibitions and collections
- Restoration

Scan options



Scanning on a rotary table



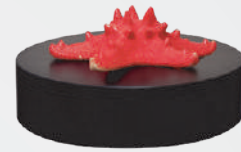
Scanning with markers



Scanning by geometry

An automatic rotary table comes with the scanner

It allows you to scan an object automatically in one click.
You can use the rotary table for scanning objects weighing up to 20 kg.



Easy and fast 3D scanning

- ▶ 5 minutes to prepare for scanning
- ▶ Plug and Play
- ▶ Automatic calibration
- ▶ One-click scanning
- ▶ Simple user interface



Compatible with any 3D printer

- ▶ Easy data export for 3D printing
- ▶ Coordinate system setting for 3D printing
- ▶ Automatic mesh-building with filling holes
- ▶ Color-textured models ready for 3D printing



A vast range of processing capabilities

- ▶ Automatic and manual alignment by markers and without markers
- ▶ Holes filling
- ▶ Object surfaces smoothing
- ▶ 3D model simplification and reduction triangles number
- ▶ Mesh defects correction
- ▶ Automatic removal of small artifacts and noise
- ▶ Other professional functions of ScanCenter NG software



Export your 3D model to other software for further processing

ScanCenter NG allows you to export 3D models to most demanded formats: STL and OBJ

Technical specifications

Scanning technology	structured light
Accuracy, up to	0.05 mm
3D resolution, up to	0.13 mm
Object size	from 3 cm to 1.2 m
FOV size, mm	200 x 150 x 150 mm
Working distance	0.3 m
Ability to capture texture	yes
Cameras resolution	2MP
Modes alignment	by markers, by geometry
3D mesh formats	OBJ, PLY, STL, PTX, ASCII
Power source for scanner	USB
Minimum computer requirements	Intel® Core™ i3/i5 1.8 GHz (Broadwell-based), 8 GB, HDMI, USB 3.0, USB 2.0 for a rotary table
Supported OS	Windows 7/8.1/10 64bit
Rotary table	yes
Platform table diameter	20 cm
Max rotary table load capacity	20 kg / 44 lb
Power source for rotary table	220 V – 12V/1A
Case dimensions	430 x 380 x 155 mm
Weight	1 kg / 2.2 lb
Full package in case weight	5.5 kg / 12.1 lb

Package contains



2-year warranty



Free software updates



Tech support



Training materials



Sign up for a free online demo!

partners@rangevision.com

rangevision.com

+39 05 211706617

sketchfab.com/rvscanners

RANGEvision